

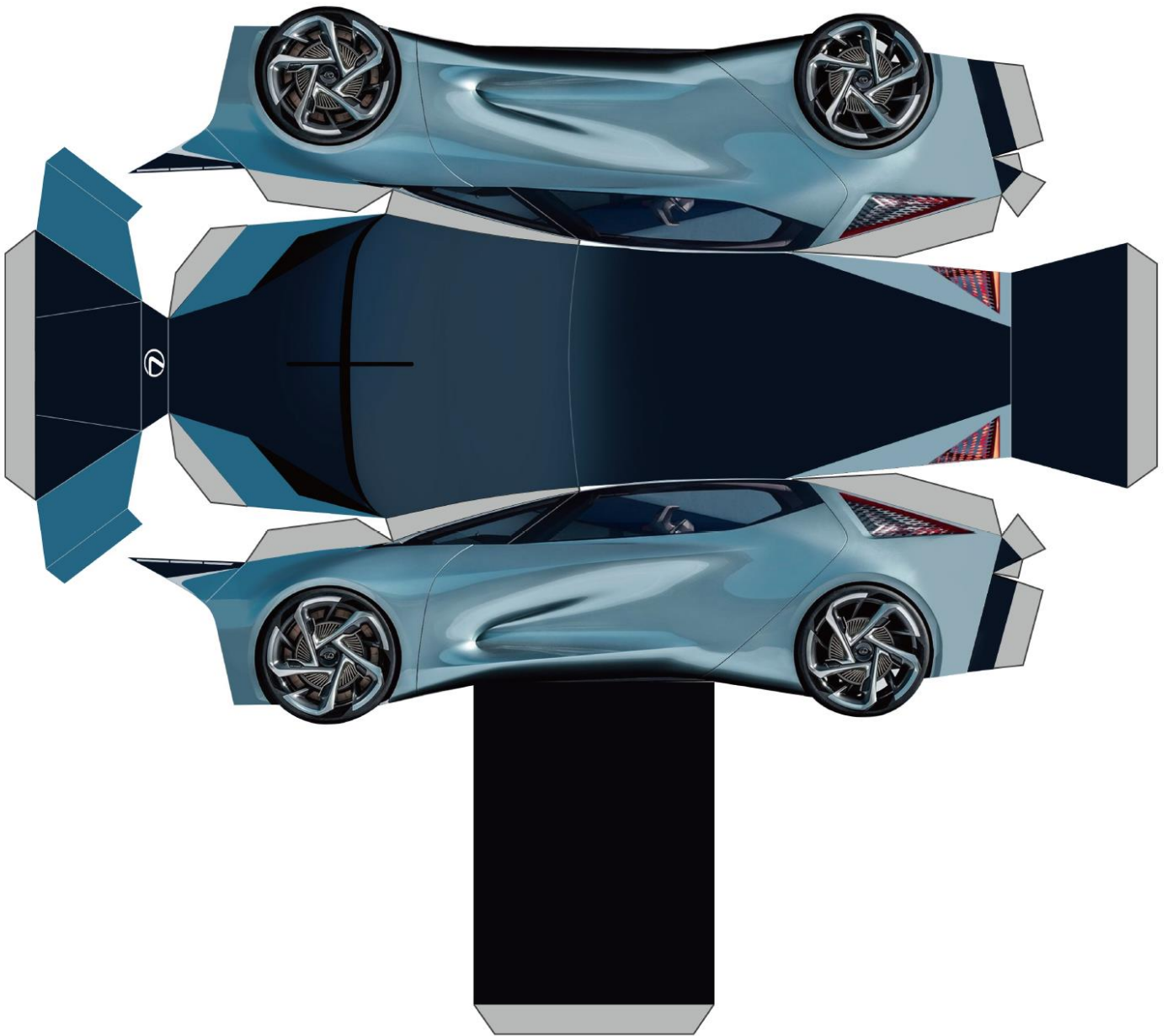


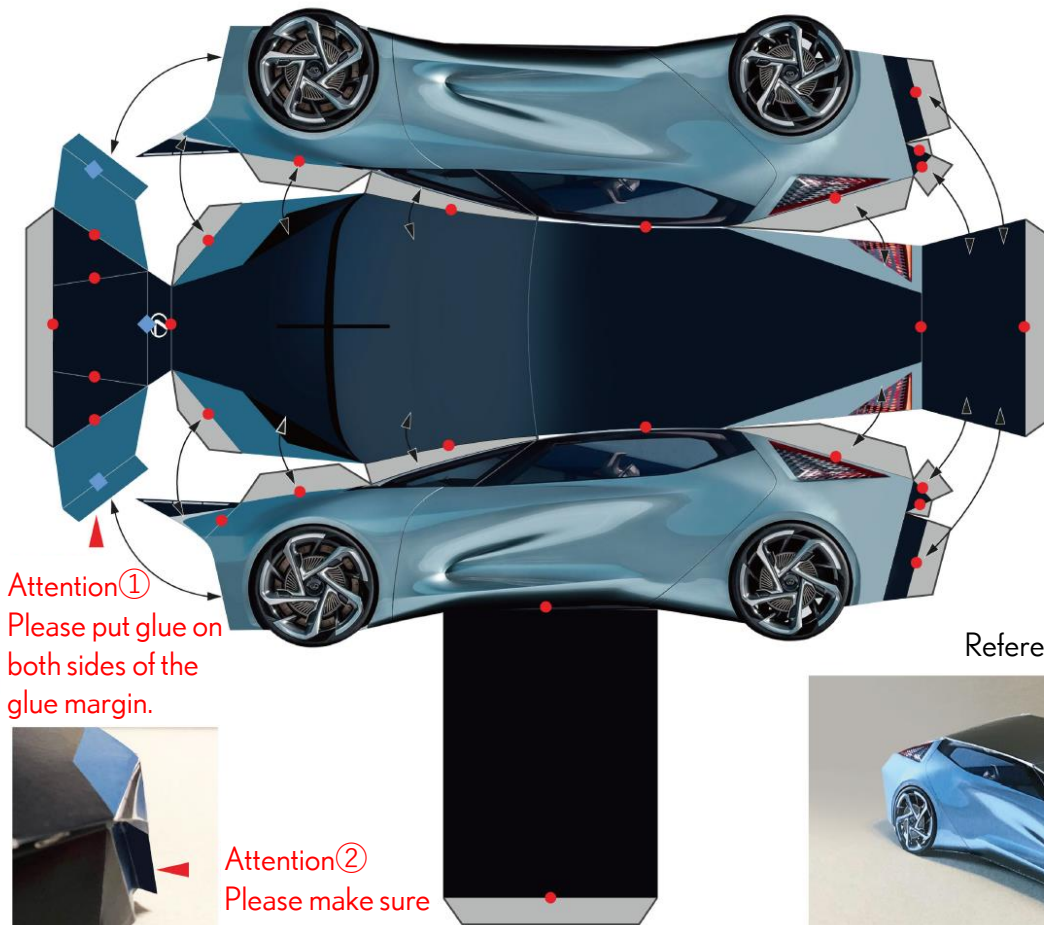
LF-30 ELECTRIFIED

Paper Craft

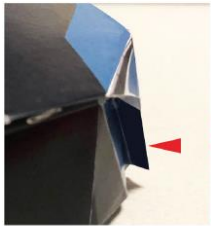
Advanced Edition

Let's make the next generation of LEXUS mobility.





Attention①
Please put glue on both sides of the glue margin.



Attention②
Please make sure the corners and edges are lined up when gluing together.

Reference Imagery



Tools

Paper (Recommend thick paper), Glue or double-sided tape (recommended), Scissors, Ruler

How to make

- Cut along the outside edges.
- Fold the lines according to the shapes (●: mountain fold, ◆: valley fold). You can use a ruler to help create smooth and beautiful folds.
- Glue together according to the arrows. We recommend using narrow double-sided tape.
- There you go, a completed LF-30!